



Post 16 Prospectus

2025



Headteacher's Welcome

I am delighted to welcome you to the Watling Academy Sixth Form, launching for our first cohort of students in September 2025.

Our Sixth Form is more than just an extension of Watling Academy; it is the culmination of our vision to create a learning environment where every student can excel. We have created a Sixth Form that reflects our high standards of teaching and pastoral care, and offers a dynamic, supportive community where students will thrive.



The vision of the Sixth Form at Watling Academy is to create young adults who are fully prepared for further study, employment and adult life in the modern world. Our Sixth Form has been developed to reflect the needs of employers today and will create independent young people who can work with flexibility and confidence in dynamic environments. We will blend the very best of traditional Post 16 education, with the awareness of the demands of a changing world.

Our Sixth Form:

- Offers students a clear pathway from GCSE options.
- Enables students to become experts in their chosen subjects, developing a love of learning that will inspire them into adulthood.
- Develops students as individuals, increasing their independence and confidence.
- Encourages students to take responsibility for their learning and progress, becoming effective life-long learners.
- Provides opportunities for extra-curricular activities and personal development.
- Prepares students for their next steps, giving advice, guidance and opportunities to make the right choices for them.
- Inspires students to become leaders in our wider school community.
- Reflects our school values of Respect, Responsibility and Kindness.

We are incredibly excited about the opportunities that are on offer at Watling Academy for our Sixth Form students; staff have reflected on the very best practice and provision we have experienced and brought them together to make an offer that is student focused and reflective of the modern world.

Teachers at Watling Academy are passionate subject experts and we are delighted to share our love of learning with our students. Staff have experience in supporting students through the UCAS and Apprenticeship application processes, including for the most competitive Universities and courses. Our students will have support and expertise from teachers that know them well to enable them to be happy and successful.

Applications are welcomed from all students who have attended Watling Academy in Year 11 in 2024/2025 and wish to transfer to the Sixth Form in September 2025. Application forms will be available in December 2024 and must be returned by 20th January 2025.

Sixth Form at Watling

What makes Watling Academy the best choice for your child's post-16 education?

Modern, Bespoke Facilities:

Our modern school facilities provide an excellent space for Post 16 study, our school building and facilities are the newest in Milton Keynes which will accommodate Sixth Form students. Our Sixth Form centre has been designed specifically to provide an inspiring and professional learning environment, with a space for students to study, socialise and grab refreshments. This building will be separate to the main school building and will be exclusively for use by Sixth Form students; many other schools do not have this facility.

A Curriculum Designed for our Students:

Our curriculum has been carefully crafted to address local and modern learning needs while preparing students for the demands of the contemporary workplace. We will equip them with the knowledge, skills, and experience required for success in higher education, apprenticeships, or employment.

Focus on the Future:

We are committed to preparing students for the challenges of the modern world, fostering skills such as critical thinking, collaboration, and resilience. With a blend of academic rigor and enrichment opportunities, our Sixth Form will empower students to achieve their ambitions. With a blended approach to learning, we will include the opportunity for students to work from home and access elements of remote learning to reflect the modern workplace.

Building on an Excellent Foundation:

At Watling Academy, our students are already part of a community where they are known, valued, and supported. Transitioning to Year 12 here means they will benefit from continuity in pastoral care, teaching styles, and expectations—allowing them to focus entirely on achieving their potential and taking advantages of new opportunities.



Curriculum

At Watling Academy we believe that all students should have access to a balanced and ambitious curriculum across a broad range of subjects. Our curriculum is designed to provide students with breadth and depth of knowledge, drawing on the best that has been thought, said and done, and to challenge students to think critically about the world around them. Our curriculum supports students in developing key skills, habits and dispositions to be successful independent learners, to enable them to access a full curriculum and to make continued progress in their learning.

Student programme of study (Year 12):

Activity	Hours per week (2-week timetable)
Subject 1	4.5
Subject 2	4.5
Subject 3	4.5
Tutorial/Assembly	1
Supervised study	1.5
Enrichment option	1
Total per Week	17

Most students will study 3 subjects. Discussions regarding a 4th A Level subject will be welcomed. Studying an additional A Level will be subject to individual discussions regarding prior attainment, aptitude and requirements for further education.

As Sixth Formers, we know that it is important that students become experts in their chosen subjects and are given the opportunities to go beyond learning that takes place in the classroom. We provide time with teachers and for independent study throughout the week to learn, revise and apply key content from their curriculum. Time each week is also allocated to preparing students for their next steps, including a bespoke personal development programme and enrichment opportunities.

Alongside subject specific content, our curriculum capitalises on opportunities to develop our students understanding of three specific areas:

Milton Keynes: Students will gain a deep understanding of the past, present and future development of Milton Keynes. This will support students in their understanding of issues affecting our city and their ability to play an informed role in working to solve them.

STEM: A focus on developing STEM related skills across the curriculum will enable students to take full advantage of opportunities within this growing employment sector in Milton Keynes.

Environmental Sustainability: Students will develop a deep understanding of the environmental challenges facing our local and global community. This will equip students with the knowledge and skills to make informed and confident contributions to tackling these environmental issues.

Our curriculum encourages all students to develop the Watling values of Respect, Responsibility and Kindness.

Pastoral

The Role of the Sixth Form Mentor

The Sixth Form Mentor at Watling Academy is a teacher with the skills and experience to guide Year 12 and 13 students through their Sixth Form journey. This role builds upon the foundational support provided by tutors in Years 7-11, focusing on academic achievement, personal development, and preparation for future destinations. The Sixth Form Mentor will provide support for individual students, helping them navigate their Sixth Form journey and prepare them for a successful transition to their next destination, whether it be higher education, apprenticeships, or the workforce.

- Mentors will be allocated to groups of students who have skills and interests in a similar area.
- A student's programme of study will be considered.
- Students will see their mentor in tutorial sessions, assemblies and in individual mentoring sessions.

The mentor will create sessions which are designed to support the development of the mentor group. This may include opportunities for trips, visits and guest speakers.

The Sixth Form Mentor will communicate regularly with parents or guardians, updating them on their child's progress and addressing any concerns.

Personal Development

The Watling Academy Sixth Form Tutorial Programme is designed to support the personal and professional development of Year 12 and 13 students, equipping them with essential life skills, career guidance, and workplace preparation. The programme also focuses on local opportunities and examples from Milton Keynes to make learning relevant and actionable. The sessions, delivered twice a week for 30 minutes by Sixth Form Mentors and through assemblies, ensure that students are well-prepared for adult life.

The Sixth Form Tutorial Programme will include:

- Making Sixth Form a success.
- Vision and Goal Setting.
- Effort and Time Management.
- Consider careers and next steps.
- Financial literacy.
- Attitudes and Wellbeing.
- Healthy Relationships.



Enrichment

Enrichment activities are a vital part of the Sixth Form experience at Watling Academy. They provide students with opportunities to broaden their horizons, develop new skills, and enhance their personal and academic growth.

All students will select and be allocated an enrichment activity to complete over their time in the Sixth Form, including one timetabled session each week.

The list below outlines some examples of enrichment programmes for students:

Weekly Work Experience:

Students may wish to complete a weekly work experience placement as part of their enrichment. This is a placement that is organised by students themselves and is completed on a voluntary basis with local employers. Students will be required to commit to their work experience throughout the school year. This offers practical experience, enhances employability skills, and provides insight into potential career paths.

Duke of Edinburgh's Award (DofE):

Students who have previously completed the Bronze Duke of Edinburgh Award may wish to continue to complete the Silver Award. Like the Bronze Award, this is a program of activities which include volunteering, physical challenges, skill development, and expeditions. Students will be required to demonstrate consistent commitment to complete the award. It builds resilience, leadership, and teamwork; recognised by employers and Universities.

The Sports Leaders Award:

The Sports Leaders Award is an excellent opportunity for students to develop leadership skills through sports. This nationally recognised qualification focuses on enhancing personal development, teamwork, and community engagement by providing practical leadership experience in a sports context.

The Extended Project Qualification:

The Extended Project Qualification (EPQ) is a unique and valuable opportunity for Year 12 students at Watling Academy to conduct independent research on a topic of their choice. This qualification allows students to delve into an area that interests them, culminating in a final project that can take various forms, such as a dissertation, an investigation, a performance, or an artefact.

The EPQ is designed to deepen knowledge and skills in a specific area, allowing students to explore a subject area that they are passionate about or interested in pursuing further in higher education or as a career. It involves a significant time commitment but can be useful in setting students apart from others in applications.

The project is mostly completed independently, with some guidance from a member of staff. Students will need to demonstrate independence, resilience and motivation to successfully complete the EPQ.

Courses

Minimum Entry Criteria for Sixth Form Students

Our Sixth Form will be inclusive, and we recognise that students may have talents and skills in particular areas of the curriculum and as such, our entry criteria is based on total points achieved at GCSE in their best 5 subjects.

Minimum of Grade 4 in English (Literature or Language) and Maths GCSE

AND

Minimum of 20 points* from best 5 GCSE courses (or equivalent)

**Total points are calculated by adding the grade achieved in each subject together.*

Entry to the Sixth Form is subject to a student having achieved the entry requirements, demonstrate an aptitude for and have an agreed programme of study based on advise and consideration.

The range of courses we offer are detailed in the following pages. If you wish to find out more about the courses we offer at Watling, then please speak to subject staff or scan the QR code below.



Art

Subject: Fine Art - Qualification: A Level
Exam Board: AQA - Specification Code: 7202



What will I learn?

The AQA A Level Fine Art course is designed to foster creativity and develop technical skills in a wide range of artistic disciplines, encouraging students to explore personal and contemporary themes in their work. It includes an in-depth personal study based on a theme or concept of their choice, and an exam paper from AQA with a choice of 8 prompts, allowing students to select and explore a new theme.

Where could this take me?

Studying AQA A Level Fine Art opens up a wide range of career opportunities in both traditional art-related fields and other sectors that value creativity, design, and analytical skills. These include: fine artist, illustrator, graphic designer, art therapist, fashion designer, animator or concept artist, architect or interior designer, curator or art gallery manager, art teacher or lecturer, digital artist, set designer or production designer, art director, or photographer.

Recommended Entry Requirements:
GCSE Art grade 5.

Applied Science

Subject: Applied Science
Qualification: BTEC Level 3 Extended Certificate (AAQ)
Exam Board: EdExcel - Specification Code: 610/3965/2

What will I learn?

BTEC Applied Science gives students a solid grounding in the principles and applications of Biology, Chemistry and Physics. It also develops practical scientific procedures and techniques and allows students to focus on investigation skills or contemporary issues in science.



Where could this take me?

A BTEC Applied Science qualification is a versatile and practical qualification that can lead to various career paths, especially in healthcare, laboratory work, environmental science, and technical roles. A Level 3 Applied Science qualification can also serve as a stepping stone to further education, including apprenticeships, foundation degrees or other higher-level programs.

Recommended Entry Requirements:
GCSE in any Science subject grade 4.

Biology

Subject: Biology - Qualification: A Level
Exam Board: OCR A - Specification Code: H420

What will I learn?

Students build on their knowledge from GCSE, establishing a strong understanding of the foundations in biology. They also study exchange and transport in organisms, biodiversity and ecosystems, evolution and genetics, disease, communication and homeostasis. Students also develop their practical skills in biology.



Where could this take me?

An A Level in Biology opens doors to a variety of careers, particularly in the fields of healthcare, research, and environmental science. It is an essential qualification for students wishing to pursue a career in medicine, dentistry, pharmacy or veterinary surgery. Biology also provides a stepping stone to studying undergraduate biological and biomedical sciences, and pathways into careers in biotechnology, agricultural sciences, food science, neuroscience and many more related fields.

Recommended Entry Requirements:
GCSE Combined Science grade 66 or
GCSE Biology grade 6.

Business Studies

Subject: Business - Qualification: A Level
Exam Board: Edexcel - Specification Code: 9BS0

What will I learn?

In Edexcel A Level Business, you'll learn about how businesses operate, grow, and respond to changes in the economic environment. You'll explore key topics like marketing, finance, operations, and human resource management, gaining insights into decision-making and strategic planning.



Where could this take me?

After studying Edexcel A Level Business, you'll have a strong foundation for pursuing higher education in business-related fields such as management, marketing, finance, or economics. The skills and knowledge gained can also open doors to apprenticeships or entry-level roles in industries like banking, retail, entrepreneurship, and consultancy.

Recommended Entry Requirements:
GCSE Mathematics grade 5.

Chemistry

Subject: Chemistry - Qualification: A Level
Exam Board: OCR A - Specification Code: H432

What will I learn?

Students build on their knowledge from GCSE, establishing a strong understanding of the foundations in chemistry. They also study the periodic table, energy and enthalpy, organic chemistry, transition elements and chemical analysis. Students also develop their practical skills in chemistry.



Where could this take me?

An A Level in Chemistry can open doors to a variety of careers, especially in scientific, healthcare, and technical fields. It is an essential qualification for students wishing to pursue a career in medicine, dentistry, pharmacy or veterinary surgery. Chemistry also provides a stepping stone to studying undergraduate chemical sciences, chemical engineering and environmental science, and pathways into careers in research, laboratory work, forensics and toxicology.

Recommended Entry Requirements:

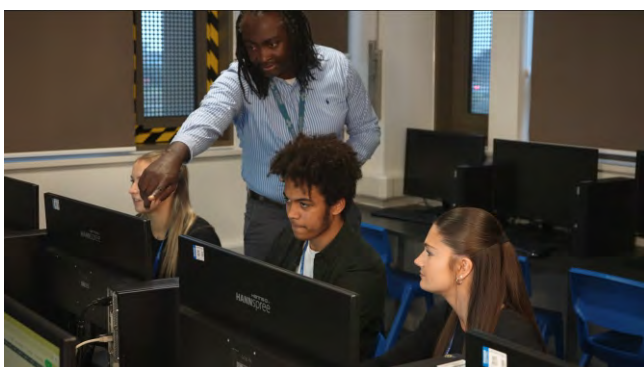
GCSE Combined Science grade 66 or
GCSE Chemistry grade 6.

Computer Science

Subject: Computer Science - Qualification: A Level
Exam Board: AQA - Specification Code: 7517

What will I learn?

Students will develop a strong grasp of the fundamentals of programming, data structures, algorithms, data representation, computer systems, computer organisation and architecture, communications and networking, databases and functional programming.



Where could this take me?

A Level Computer Science develops students' capacity for thinking creatively, innovatively, analytically, logically and critically. It opens up opportunities for further study or careers in a number of fields, including: software development, systems analysis, network engineering, cybersecurity, data science, artificial intelligence and machine learning.

Recommended Entry Requirements:

GCSE Computer Science grade 5

Construction and the Built Environment

Subject: Construction and the Built Environment
 Qualification: BTEC Level 3 Extended Certificate (AAQ)
 Exam Board: Edexcel - Specification Code: 610/3959/7

What will I learn?

The course consists of three mandatory units which explore construction principles, construction technology and the design aspect of the built environment. Students will also look at another area, chosen from commercial management, retrofitting or modelling.



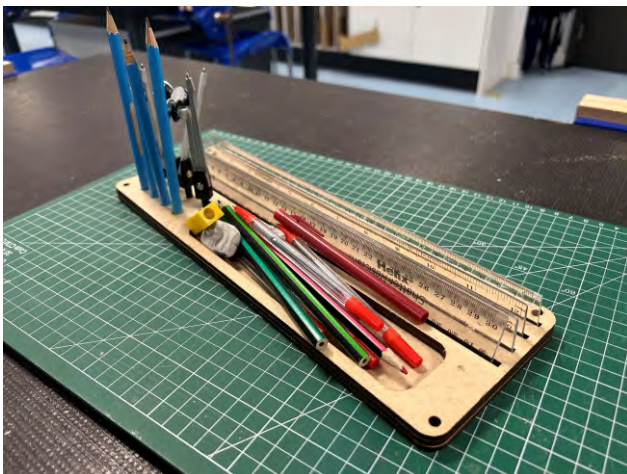
Where could this take me?

Students will develop their knowledge of construction technology and sustainability within construction. They will gain skills such as problem solving, project management and modelling through CAD/CAM. This qualification could provide pathways to studying architecture, construction management or civil engineering. Milton Keynes has a wealth of opportunities in the construction industry, and this course will open up many opportunities in the local area.

Recommended Entry Requirements:
 GCSE Design Technology grade 4 or CNat Engineering Level 2 Pass.

What will I learn?

The course consists of three mandatory components, looking at visual recording and communication, critical and contextual studies in art and design and the creative process. The additional unit is focused on graphics, with graphic materials, techniques and processes.



Design - Graphics

Subject: Art and Design (Graphics)
 Qualification: - BTEC Level 3 Extended Certificate
 Exam Board: Edexcel - Specification Code: 603/0448/0

Where could this take me?

Students develop their skills in design, using both hand-drawing and computer aided design tools. The course prepares students for further study in the subject, and opens pathways to careers in the graphics industry, such as marketing, advertising, interior design, architecture, fashion design and print design for websites.

Recommended Entry Requirements:
 GCSE Design Technology grade 4.

Drama and Theatre

Subject: Drama and Theatre - Qualification: A Level
Exam Board: AQA - Specification Code: 7262

What will I learn?

Students build on their knowledge and understanding of drama and theatre. They study two set plays, analyse and evaluate the work of live theatre makers, create and perform devised drama pieces, explore and interpret extracts from different plays and produce a reflective report analysing and evaluating the theatrical interpretation of these extracts.



Where could this take me?

The skills developed through the study of Drama are integral to roles across the creative industry. Students could enter a range of industries: teaching (primary and secondary), scriptwriting, drama school, TV/film/theatre production, psychology & drama therapy, music, sales/marketing, entertainment representative, journalism, law, gaming and advertising.

Recommended Entry Requirements:
GCSE Drama grade 5.

What will I learn?

Students study a wide range of classical and contemporary texts and develop their critical analysis of literature. They look at a Shakespeare play and another drama, prose texts on a chosen theme, poetry from different periods and complete a non-examined assessment piece on two texts of their own choice, based around a theme.



English Literature

Subject: English Literature - Qualification: A Level
Exam Board: Edexcel - Specification Code: 9ET0

Where could this take me?

The skills developed through studying English Literature open up opportunities for further study or careers in fields such as law, journalism, publishing, policy analysis, marketing, public relations, advertising, teaching, content creation, corporate communication, creative writing, film and media, theatre and publishing.

Recommended Entry Requirements:
GCSE English Literature or Language grade 6.

English Literature and Language

Subject: English Literature and Language
Qualification: A Level
Exam Board: AQA - Specification Code: 7707

What will I learn?

Students develop their methods of language analysis through studying the representation of place, the forms and functions of poetic voice and point of view and genre in prose. They also look at the role of the individual in society, critical commentary and conflict in drama. Students also carry out a non-examined assessment investigation on a chosen theme and texts.

Where could this take me?

The skills developed through studying English Literature and Language open up opportunities for further study or careers in fields such as law, journalism, publishing, policy analysis, marketing, public relations, advertising, teaching, content creation, corporate communication, creative writing, film and media, theatre and publishing.

Recommended Entry Requirements:
GCSE English Literature or Language grade 5.



What will I learn?

Students look at a variety of issues relating to food and nutrition, with some choice over which area to focus on. This includes meeting the nutritional needs of specific groups, ensuring food is safe to eat, experimenting to solve food production problems and looking more closely at current issues in food science and nutrition.

Food Science and Nutrition

Subject: Food Science and Nutrition
Qualification: Level 3 Diploma in Food Science and Nutrition
Exam Board: WJEC - Specification Code: 601/4553/5

Where could this take me?

Food Science and Nutrition can take students towards careers in the food and drinks sectors of hospitality, catering and food production. The skills and knowledge developed are used by nutritionists in hospitals, sports coaches and fitness instructors. Food manufacturers and government agencies also use this understanding to develop menus, food products and policies that support healthy eating initiatives.

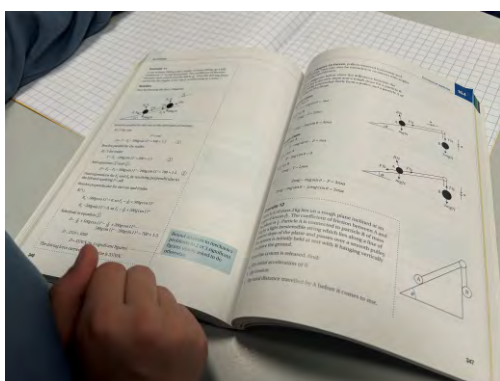
Recommended Entry Requirements:
GCSE Design Technology or GCSE Food and Nutrition grade 4.

Further Mathematics

Subject: Further Mathematics - Qualification: A Level
Exam Board: - Specification Code:

What will I learn?

The Further Mathematics course covers more advanced mathematical concepts, stretching beyond the scope of A level Mathematics. Topics include proof, complex numbers, matrices, further algebra and functions, further calculus, further vectors, polar coordinates, hyperbolic functions and differential equations.



Where could this take me?

Maths opens the doors to so many opportunities beyond A Level. A strong foundation in maths is essential when studying most scientific, mathematical and statistical based degrees. Maths can support students pursuing careers in statistics, data analysis, accountancy, computer science, cyber security, engineering and many more.

Recommended Entry Requirements:

GCSE Mathematics or GCSE Further Mathematics grade 7.

Geography

Subject: Geography - Qualification: A Level
Exam Board: AQA - Specification Code: 7037

What will I learn?

The course is broken into two components: physical geography and human geography. Physical geography looks at water and carbon cycles, coastal systems and landscapes, hazards, glacial or hot desert systems. Human geography looks at global systems and governance, contemporary urban environments, population and resource security.



Where could this take me?

Studying A Level Geography can lead to a wide range of careers in the UK across various sectors. Careers utilise the diverse skills developed through geography, including analytical thinking, data interpretation, problem-solving, and an understanding of global and environmental processes. Examples of career areas utilising these skills include meteorology, transport planning, conservation, climate and sustainability, and archaeology.

Recommended Entry Requirements:

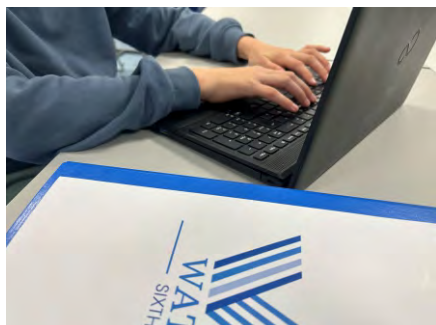
GCSE Geography or GCSE Sociology grade 6.

Health and Social Care

Subject: Health and Social Care
 Qualification: Level 3 Cambridge Advanced National (AAQ)
 Exam Board: OCR - Specification Code: H125

What will I learn?

The course establishes the principles of health and social care, looks at anatomy and physiology for health and social care, and focuses on ways in which to support people with long-term physiological conditions, with mental health conditions and with maintaining healthy nutrition and lifestyles.



Where could this take me?

The Health and Social Care qualification gives students the skills and knowledge to move into careers in the associated sector. Milton Keynes has a wealth of opportunities in this area, with careers in nursing, social work, occupational therapy, in care homes and in early years settings. These are key roles in the local job market. It also sets students up for further study or apprenticeships in related sectors.

Recommended Entry Requirements:

GCSE English Literature or English Language grade 4.

What will I learn?

The A Level History course focuses on two areas, the first being The Making of a Superpower: USA 1865-1975, looking at Civil War to World War, 1865-1920 and Crises and the rise to World Power, 1920-1975. The second is The Making of Modern Britain, 1951-2007, exploring Building a new Britain, 1951-1979 and Modern Britain, 1979-2007.



History

Subject: History - Qualification: A Level
 Exam Board: AQA - Specification Code: 7402

Where could this take me?

History is a subject which is important for further study of humanities subjects and a whole host of other arts degrees. Careers most closely linked to the subject are business, law, politics, work in heritage organisations, the media and in archives or museums.

Recommended Entry Requirements:

GCSE History or GCSE Sociology grade 6

Mandarin

Subject: Mandarin Chinese - Qualification: A Level
Exam Board: Edexcel - Specification Code: 9CN0



What will I learn?

The course builds on students' prior knowledge of the language and explores the history and culture of China in more detail. The main areas are social issues and trends, political and artistic culture, grammar and study of written works. Students also complete an individual research project.

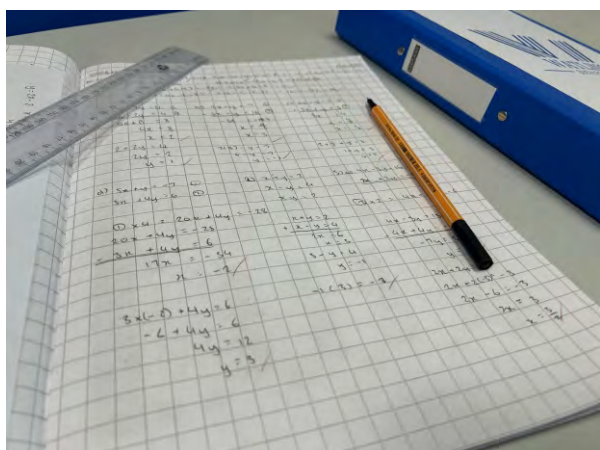
Where could this take me?

As the most spoken language on the planet, an A Level qualification in Mandarin equips students with a valuable skill. As well as the possibility of studying the language further at university, it opens up the opportunity to study any other subject in China and for travelling and working there. Careers in technology and other industries where China is a key player will be more accessible to students with the ability to communicate in Mandarin.

Recommended Entry Requirements:
GCSE Mandarin grade 7.

What will I learn?

The course is made up of three components, pure mathematics, statistics and mechanics. This includes algebra and functions, coordinate geometry, sequences and series, trigonometry, exponentials and logarithms, calculus, numerical methods, statistical sampling, probability, distributions, kinematics, forces and Newtonian mechanics and moments.



Mathematics

Subject: Mathematics - Qualification: A Level
Exam Board: Edexcel - Specification Code: 9MA0

Where could this take me?

Maths opens the doors to so many opportunities beyond A Level. A strong foundation in maths is essential when studying most scientific, mathematical and statistical based degrees. Maths can support students pursuing careers in statistics, data analysis, accountancy, computer science, cyber security, engineering and many more.

Recommended Entry Requirements:
GCSE Mathematics grade 7.

Music

Subject: Music - Qualification: A Level
Exam Board: WJEC Edugas - Specification Code: A660QS

What will I learn?

A Level Music develops students' skills and knowledge in three main areas. Firstly, performing, including solo and ensemble performances. Secondly, composing, following a set brief in the Western Classical Tradition, as well as a free composition. The final area is appraising, across three areas of study.



Where could this take me?

The skills developed through the study of music are relevant to a wide range of future careers. Music analysis, composition, sound engineering, and even non-music-related fields like data analysis or consultancy, benefit from these skills. Additionally, high-stress professions like project management, law, or healthcare often benefit from disciplined work ethic developed through studying music.

Recommended Entry Requirements:
GCSE Music grade 5.

What will I learn?

The course consists of three main components: Philosophy of Religion, Religion and Ethics and the Development of Religious Thoughts. Students will study ancient philosophical influences, consider arguments for and against the existence of God and the application of ethical theory.



Philosophy and Ethics

Subject: Philosophy and Ethics
Qualification: A Level Religious Studies
Exam Board: OCR - Specification Code: H573

Where could this take me?

Studying this course opens doors to teaching, charity, and equality, diversity and inclusion jobs. It can lead to opportunities in a variety of other careers from law to business. The subject enables you to better understand people from diverse backgrounds and handle respectful disagreements. The analysis and critical thinking skills developed will also help students in further study of humanities and arts degree subjects.

Recommended Entry Requirements :
GCSE in any suitable humanities subject grade 5.

Physical Education

Subject: Physical Education - Qualification: A Level
Exam Board: OCR - Specification Code: H555



What will I learn?

A Level Physical Education covers physiological and psychological factors affecting performance, and socio-cultural issues in physical activity. There are also non-examined assessment units, with a focus on practical performance and the analysis and evaluation of the performance of a peer.

Where could this take me?

The communication and leadership skills developed through the study of this course are highly valued by employers. The knowledge gained from studying this course can open up career opportunities in areas such as sports coaching, physiotherapy, sports science, psychology, personal training and sports therapy.

Recommended Entry Requirements:

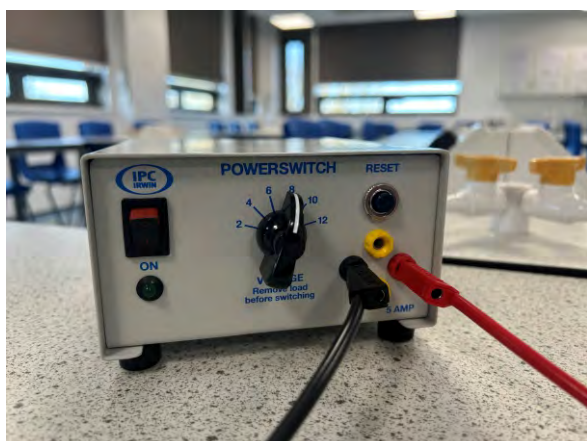
Individual discussions regarding practical skill and experience in a sport.

Physics

Subject: Physics - Qualification: A Level
Exam Board: OCR - Specification Code: H566

What will I learn?

Students build on their knowledge from GCSE, establishing a strong understanding of the foundations in physics. They also study forces and motion, electrons, waves and photons, the Newtonian world and astrophysics, particles and medical physics.



Where could this take me?

Physics is an essential subject for those students wishing to study the physical sciences at university. It also equips students with the knowledge and skills to pursue careers in a wide range of scientific and technical fields, including mechanical, electrical, civil and chemical engineering, technology and computing, aerospace and aviation, energy and environmental sciences.

Recommended Minimum Entry

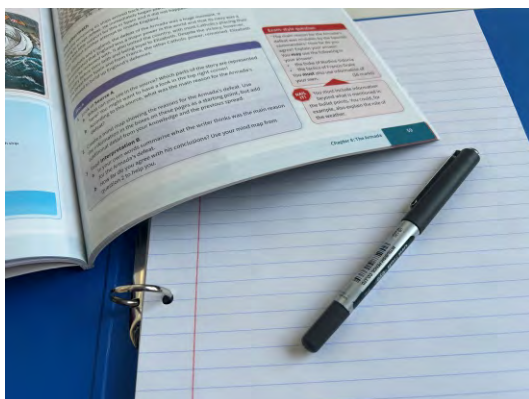
Requirements: GCSE Combined Science grade 66 or GCSE Physics grade 6.

Psychology

Subject: Psychology - Qualification: A Level
Exam Board: AQA - Specification Code: 7182

What will I learn?

A Level Psychology offers students a solid grounding in the key areas of the subject. This includes social influence, memory, attachment, psychopathology and biopsychology. The course also looks at research methods and key issues and debates in the field of psychology.



Where could this take me?

Students will have a strong foundation for degree level study in a range of areas, including psychology, forensic science, criminology, social work and law. Successful students will have developed excellent essay writing skills, which is essential for further study in any area. Psychology students are successful in a range of career sectors including Clinical Psychology, Counselling and Psychotherapy, Child Development, Healthcare, Criminal Justice and Human Resources.

Recommended Entry Requirements:
Entry Requirements: GCSE in any science subject grade 5.

Spanish

Subject: Spanish - Qualification: A Level
Exam Board: AQA - Specification Code: 7692

What will I learn?

The course builds on students' prior knowledge of the language and explores the history and culture of Spain in more detail. The main areas are social issues and trends, political and artistic culture, grammar and study of written works. Students also complete an individual research project.



Where could this take me?

The course develops language learning skills and strategies, including communication strategies to sustain communication and build fluency and confidence. It prepares students for studying the language at university, opens up the opportunity to study any other subject in Spain and makes the prospect of travelling and working there more accessible.

Recommended Entry Requirements:
GCSE Spanish grade 6.

Sport and Physical Activity

Subject: Sport and Physical Activity

Qualification: Level 3 Cambridge Technical Extended Certificate

Exam Board: OCR - Specification Code: 601/7094/3

What will I learn?

Students explore a range of topics through both examined units and non-examination assessment tasks. These include body systems and the effects of physical activity, sport coaching and activity leadership, sport organisation, injuries and rehabilitation.



Where could this take me?

The communication and leadership skills developed through the study of this course are highly valued by employers. The knowledge gained from studying this course can open up career opportunities in areas such as sports coaching, physiotherapy, sports science, psychology, personal training and sports therapy.

Recommended Entry Requirements:

GCSE Physical Education grade 4 or CNat Sports Studies Level 2 pass.

Sociology

Subject: Sociology - Qualification: A Level
Exam Board: AQA - Specification Code: 7192



What will I learn?

The A Level Sociology course covers a range of interesting topics from different areas of the subject. This includes education theory and methods, culture and identity, beliefs in society and crime and deviance. Students also learn to apply sociological research to the study of education.

Where could this take me?

Students will have a strong foundation for degree level study in a range of areas, including Sociology, Psychology, Social Work and Law. Successful students will have developed excellent essay writing skills which is essential for further study in any area. Sociology students are successful in a range of career sectors including; law, politics, policy making, social care, education, criminal justice, healthcare, media and journalism

Recommended Entry Requirements:

GCSE in any suitable Humanities subject grade 5.



**Barrosa Way,
Whitehouse,
Milton Keynes
MK8 1EP
T:01908 794094
E: admin@watling.academy**